

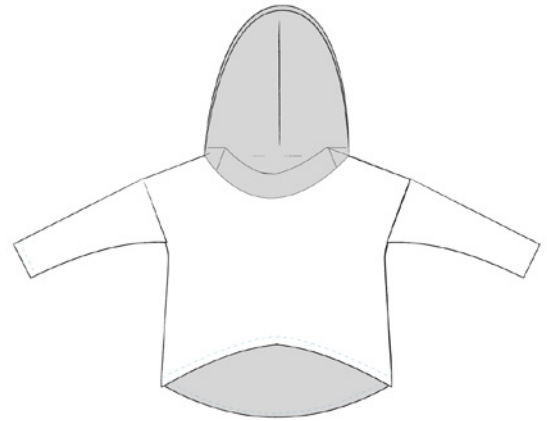
Hemming

To finish your hoodie, you only have to hem your hood, the sleeves and the lower hem.

Fold the fabric 1x 2m/ 3/4in or 2x 1cm / 1/4in to the inside, press it and pin it in place.

Now topstitch from the right side.

Depending on what kind of fabric you are using, it might look nice to leave the edges untrimmed.



You have finished your oversizeSHO!odie :-)



Copyright © SHO! / Silke Hoerl

All rights for this ebook/pattern are with Silke Hoerl. You may use this pattern for personal use only. In case you want to use it in a commercial way, you need to ask for permission (sackhose@einfach-sho.de). Trading, sharing, copying this ebook or parts of it is strictly forbidden.

All information in this ebook (instruction and/or pattern) are subject to change. All rights are reserved (instruction, pattern and photograph) for Silke Hoerl.

I assume no liability for mistakes in the instruction.



OPTION: LENGTHEN TO DRESS LENGTH

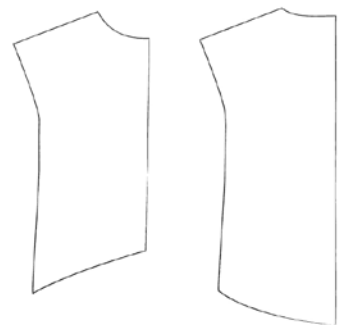
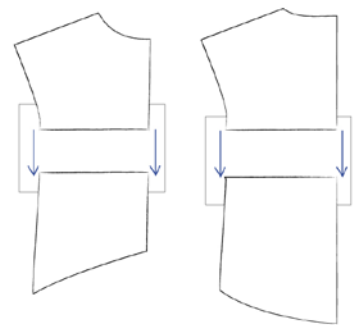
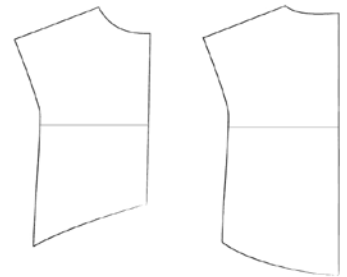
In case you want to lengthen the pattern to a dress, cut the pattern at the line marked „cutline for lengthening“.

Place a piece of paper behind your top pattern part and stick it together. Now draw a line parallel to the cut line. The distance of the line is the required length you want to have – I recommend 25cm / 10in. At this line you stick the lower part of the pattern to the piece of paper. Connect the two lines by adjusting the curve. Now you have a new, longer pattern piece for your oversized SHOLOdie dress.

Repeat for the other bodice pattern piece.

The 25cm / 10in mentioned above are an orientation for a body size of 1,68m / 5ft – 6in.

Of course you can choose whatever length you wish.



INFO: LENGTHEN THE FRONT PART DUE TO A BIGGER BUST CIRCUMFERENCE

For the ones of you with a bigger bust circumference I recommend to lengthen the front bodice part, so it doesn't get too short in the end.

To do so place a piece of paper to the lower end of the pattern piece and lengthen the line of the center front the required length (3- 5cm / 1 - 2in).

From this point adjust the curve to the side seam and you have a new pattern piece for a lengthened front bodice part.



Copyright © SHO! / Silke Hoerl

All rights for this ebook/pattern are with Silke Hoerl. You may use this pattern for personal use only. In case you want to use it in a commercial way, you need to ask for permission (sackhose@einfach-sho.de). Trading, sharing, copying this ebook or parts of it is strictly forbidden.

All information in this ebook (instruction and/or pattern) are subject to change. All rights are reserved (instruction, pattern and photograph) for Silke Hoerl.

I assume no liability for mistakes in the instruction.